



TMEM145 Polyclonal Antibody

Catalog No	YP-Ab-13704
Isotype	IgG
Reactivity	Human;Mouse
Applications	WB;IHC;IF;ELISA
Gene Name	TMEM145
Protein Name	Transmembrane protein 145
Immunogen	The antiserum was produced against synthesized peptide derived from human TMEM145. AA range:58-107
Specificity	TMEM145 Polyclonal Antibody detects endogenous levels of TMEM145 protein.
Formulation	Liquid in PBS containing 50% glycerol, 0.5% BSA and 0.02% sodium azide.
Source	Polyclonal, Rabbit,IgG
Purification	The antibody was affinity-purified from rabbit antiserum by affinity-chromatography using epitope-specific immunogen.
Dilution	Western Blot: 1/500 - 1/2000. Immunohistochemistry: 1/100 - 1/300. Immunofluorescence: 1/200 - 1/1000. ELISA: 1/10000. Not yet tested in other applications.
Concentration	1 mg/ml
Purity	≥90%
Storage Stability	-20°C/1 year
Synonyms	TMEM145; Transmembrane protein 145
Observed Band	56kD
Cell Pathway	Membrane ; Multi-pass membrane protein .
Tissue Specificity	Retinoblastoma,
Function	
Background	TMEM145 (transmembrane protein 145) is a 493 amino acid protein encoded by a gene mapping to human chromosome 19. Consisting of around 63 million bases with over 1,400 genes, chromosome 19 makes up over 2% of human genomic DNA. Chromosome 19 includes a diversity of interesting genes and is recognized for having the greatest gene density of the human chromosomes. It is the genetic home for a number of immunoglobulin superfamily members including the killer cell and leukocyte Ig-like receptors, a number of ICAMs, the CEACAM and PSG family, and Fcγ receptors. Key genes for eye color and hair color also map to chromosome 19. Peutz-Jeghers syndrome, spinocerebellar ataxia type 6, the stroke disorder CADASIL, hypercholesterolemia and insulin-dependent diabetes have been linked to chromosome 19. Translocations with chromosome 19 and



chromosome 14 can be seen in some lymphoproliferative disorders and typically involve the proto-oncogene BCL3.

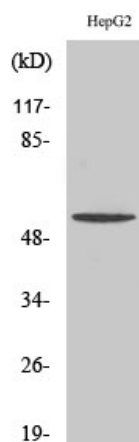
matters needing attention

Avoid repeated freezing and thawing!

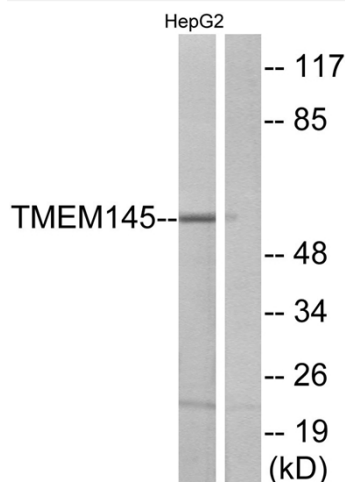
Usage suggestions

This product can be used in immunological reaction related experiments. For more information, please consult technical personnel.

Products Images



Western Blot analysis of various cells using TMEM145 Polyclonal Antibody. Secondary antibody(catalog#:RS0002) was diluted at 1:20000



Western blot analysis of lysates from HepG2 cells, using TMEM145 Antibody. The lane on the right is blocked with the synthesized peptide.